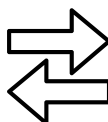
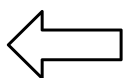
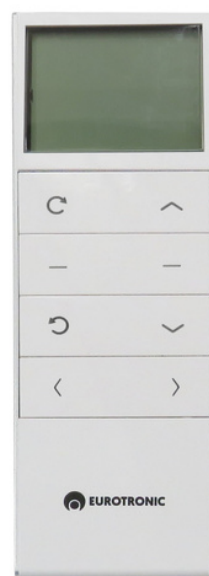
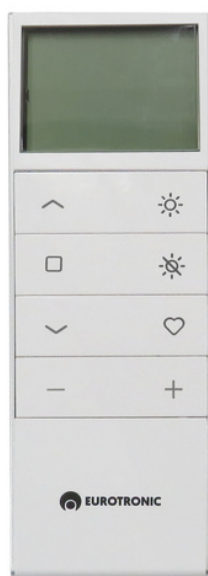




KIK CONTROLS



Two-way
protocol

Two-way
protocol

Radio control

KIK 1 CHANNEL | KIK 15 CHANNELS | KIK SUN | KIK ORIENTA

KIK CONTROLS

KIK remote controls offer versatile and precise solutions for controlling blinds, shades and awnings, with options to manage between 1 and 15 devices depending on the model. All remotes share a sleek, compact white design, but each model features dedicated buttons: the KIK 1 and KIK 15 allow efficient control of multiple devices, the KIK SUN offers manual or automatic opening modes with sunlight function, and the KIK ORIENTA adds precise adjustment for slat orientation on vertical blinds.

REFERENCES



KIK 1 CHANNEL | BD.003.101



KIK 15 CHANNELS | BD.003.115



KIK ORIENTA | 75.003.015



KIK SUN | BD.003.115 SUN

Controls for bidirectional and unidirectional motors.

Radio frequency 433.92 Mhz

Measurements: 63 x 35 x 13 mm.

They have channel limitation.

They have a channel to operate all devices simultaneously.

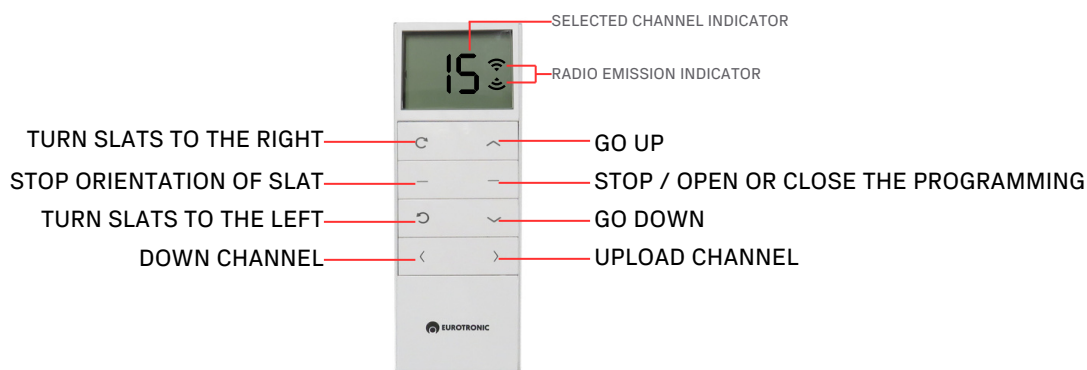
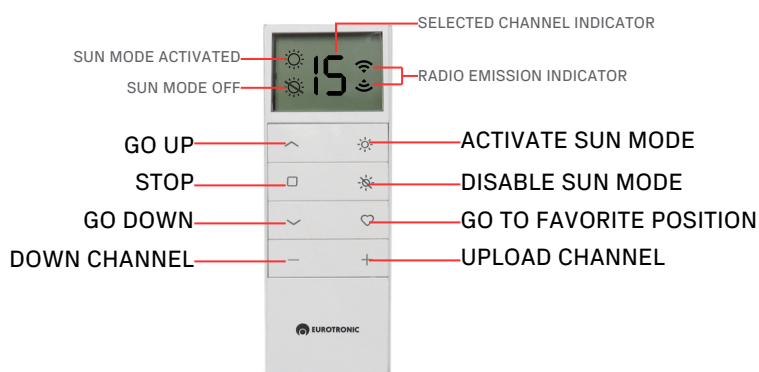
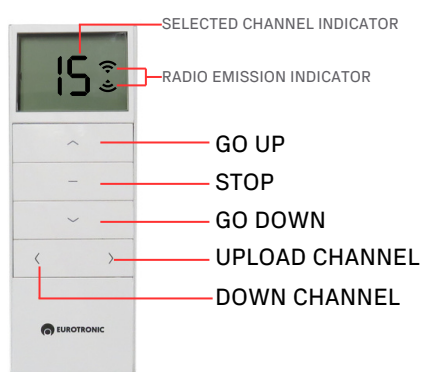
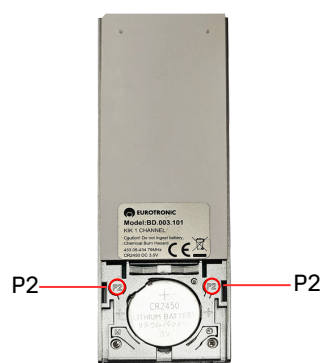
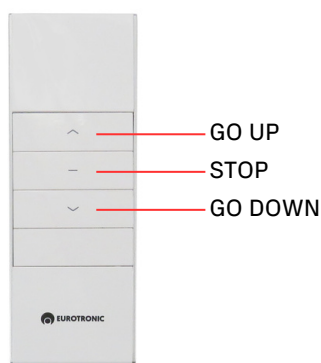
KIK SUN has a SUN function.

KIK ORIENTA has buttons to rotate the adjustable slats of vertical blinds.

TECHNICAL CHARACTERISTICS

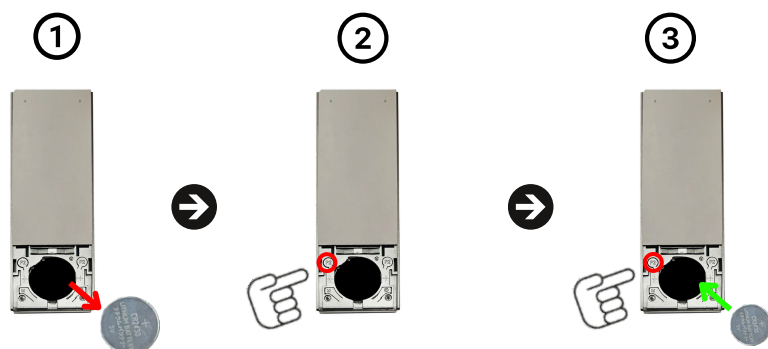
Name	No.Channels	Feeding	Battery Type	Frequency	Temperature	Measures
KIK 1	1	3V	Litio CR2450	433.92 Mhz	0 - 50° C	44 x 128 mm
KIK 15	15	3V	Litio CR2450	433.92 Mhz	0 - 50° C	44 x 128 mm
KIK SUN	15	3V	Litio CR2450	433.92 Mhz	0 - 50° C	44 x 128 mm
KIK ORIENTA	15	3V	Litio CR2450	433.92 Mhz	0 - 50° C	44 x 128 mm

DESCRIPTION OF KEYS AND SCREEN DISPLAYS



INSTRUCTIONS:

1. PROTOCOL CHANGE (UNIDIRECTIONAL / BIDIRECTIONAL)



Procedure:

1. Remove the battery from the remote control
2. Press and hold the button (P2)
3. While holding down the (P2) button on the remote, replace the battery in its place.

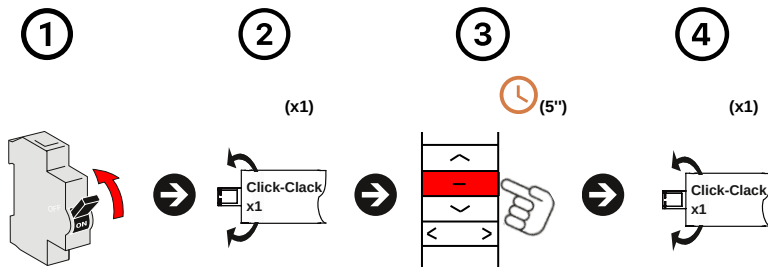
KIK 15: The remote will confirm one-way (1) or two-way (2) mode on the screen.

KIK 1: Will make one blue flash (one way) or two blue flashes (two way) between the stop button and the down button.

One-way mode only works with KIK1 and KIK15

2. LINK AS FIRST CONTROLLER

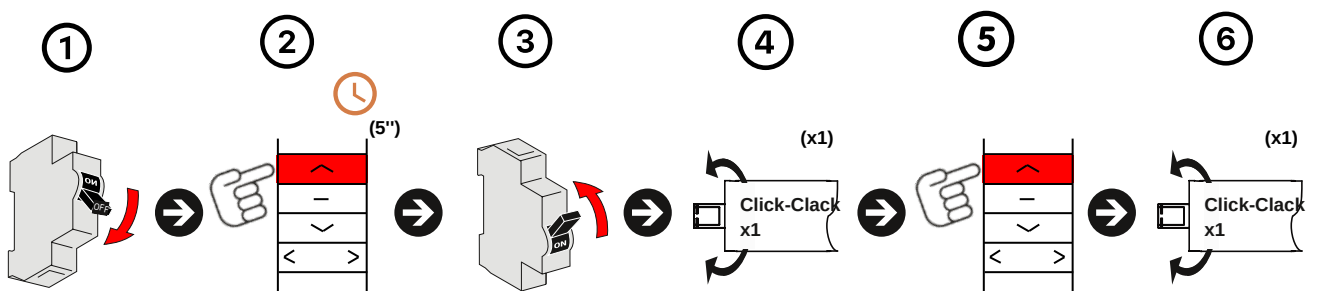
Two-way mode:



Procedure:

1. To give current.
2. The motor will make a "CLICK-CLACK" sound (x1).
3. Press (STOP) on the remote control to record for five seconds (5").
4. The motor will make a "CLICK-CLACK" sound (x1).

One-way mode:

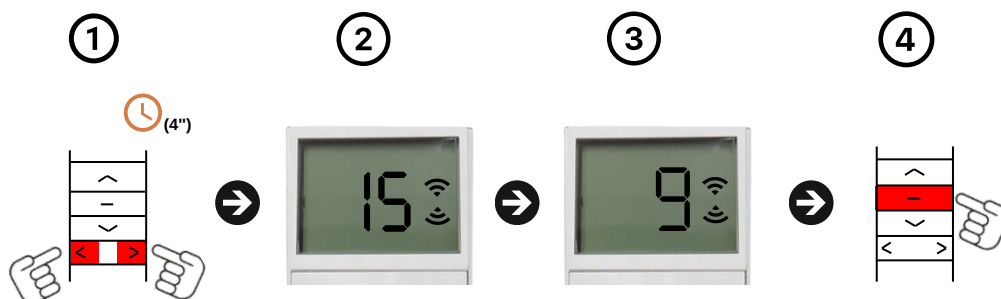


Procedure:

1. Turn off the power.
2. Press the (UP) button for five seconds (5").
3. Without releasing the up button we will give current.
4. The motor will make a beep (x1) and a "CLICK-CLACK" (x1).
5. We will press the (UPLOAD) button again to confirm.
6. The motor will make a "CLICK-CLACK" sound (x1).

Binding in one-way mode only works with KIK1 and KIK15

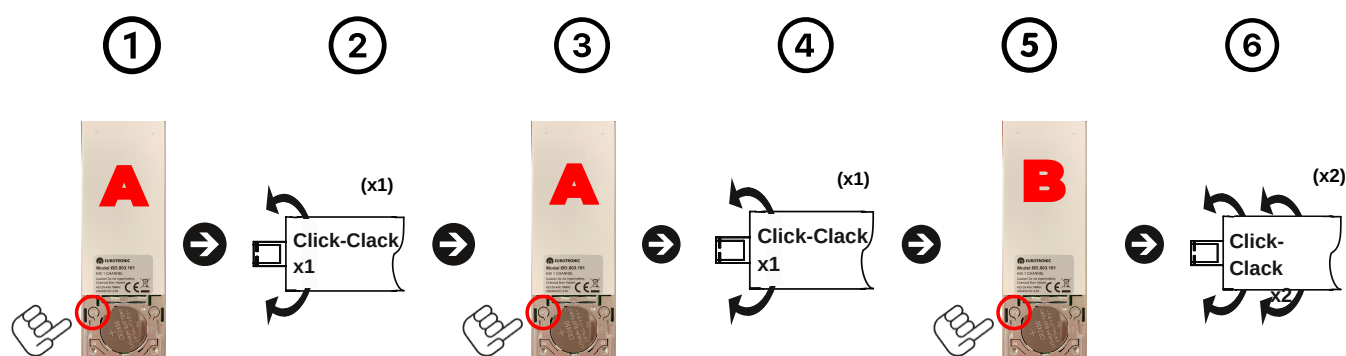
3. LIMIT NUMBER OF CHANNELS



Procedure:

1. Press the (RIGHT + LEFT) buttons for four seconds (4").
2. The number 15 will appear on the screen.
3. Choose the number of channels to use.
4. Press the (STOP) button to confirm.

4. MAKE A COPY OF THE MAIN COMMAND



Procedure:

1. Press the button (P2) located behind the already linked transmitter (A).
2. The green LED will flash.
3. We will press the button (P2) of the same transmitter (A) again.
4. The green LED will flash.
5. Then press the (P2) button on the new transmitter (B) to confirm.
6. The green LED will flash five times (x5).



www.eurotronic-europe.com

C/Pica d'Estats, 108-118 Poligono Industrial Sant Isidre
08272 Sant Fruitós de Bages (Barcelona) SPAIN

pedidos@eurotronic-europe.com Tel: +34 932 420 108